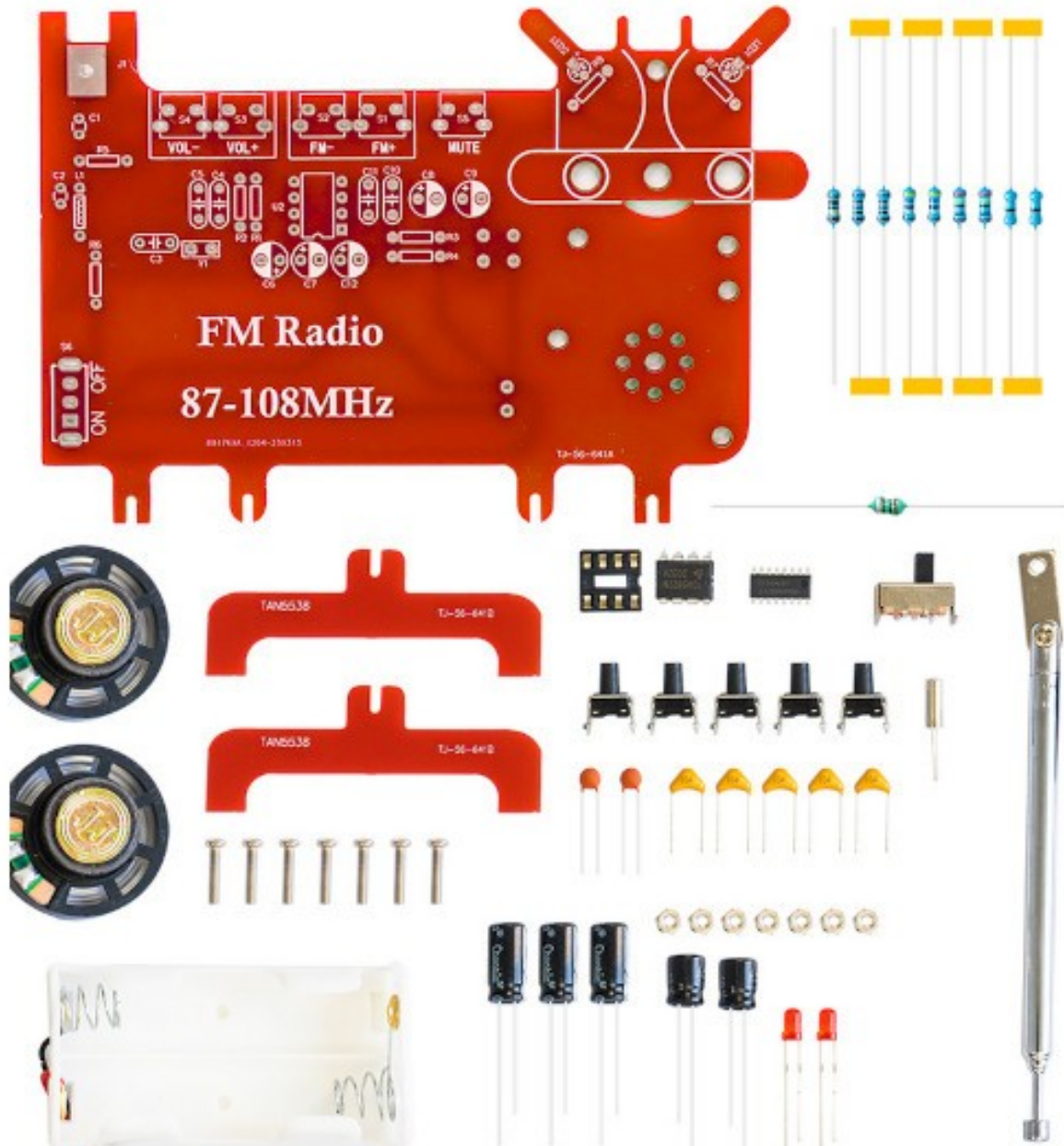


SOLDERING KIT FM RADIO



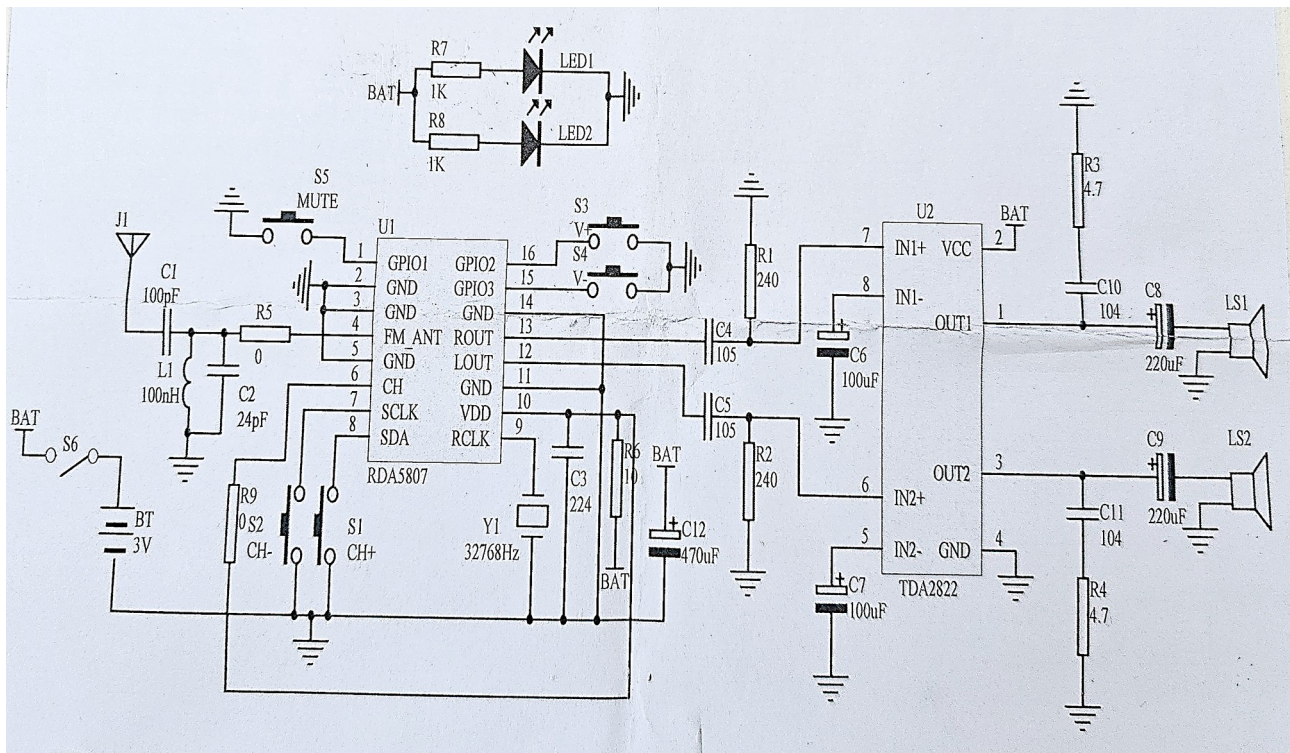
Necessary tools:

Wire Cutters: we recommend [PGC-TR25](#) they are sharp and light
Twizzers: we recommend [PGC-00SA](#)
Soldering iron: [CHN-SLD802](#) is budged solution, [SLD-FAST-75W](#) is professional solution
Soldering wire: we recommend [Solder-Wire-SAC0307-0-8](#)

General tips for soldering:

1. Switch On the soldering iron, setup the working temperature to 350 C. Wait until the Soldering Iron reach this temperature – there is LED indicator which will pulse when the temperature is reach.
2. Before soldering clean the Soldering tip with wet sponge from the black resedues.
3. Never touch the heated soldering tip or body.
4. Do not leave the Soldering Iron unattended.
5. Be careful to not touch cables, table, cloths with the soldering iron heated body or tip.
6. Place the electronic component on it's place, watch out if there is polarity.
7. Touch the component pad which you want to solder and wait 3-4 seconds to heat up.
8. Feed a little from the soldering wire until the component lead is flooded with tin and it's shinny and glossy.
9. If the soldering is not shinny but dull please re-solder with colophony.

Soldering kit FMRADIO-STEREO schematic:



Assembly instructions:

The FM-RADIO kit have ON-OFF switch and five push buttons for: CH+ CH- VOL+ VOL- Mute. Two AA size 1.5V batteries are necessary (not included).

List of Components:

R7 R8 1 K ohm
R3 R4 4.7 ohm
R6 10 ohm
R5 R9 0 ohm
R1 R2 240 ohm

L1 100 uH

C4 C5 1 uF (marking 105)
C3 220 nF (marking 224)
C10 C11 100 nF (marking 104)
C2 22 pF (marking 22)
C1 100 pF (marking 101)
C6 C7 100 uF (have polarity! White strip is -)
C8 C9 220 uF (have polarity! White strip is -)
C12 470 uF (have polarity! White strip is -)

Y1 32768 (metal can)
LED1 LED2 RED3mm (longer leg is +)

S6 ON-OFF switch

LS1 LS2 speakers use hot glue to attach to the PCB.

S1 S2 S3 S4 S5 side push button switch

U1 RD5807 attention it have polarity

U2 TDA2822 attention it have polarity

LC DIP8 socket attention it have polarity

BT battery box – used double adhesive tape to attach to PCB

ANT telescopic antenna use screw to attach and solder to make contact with the PCB