

**LPC-L2294** is compact development board with LPC2294 ARM7DTMI microcontroller from Philips Semiconductors Inc. with 512KB internal flash, 64KB internal RAM, There are two options: 1MB external RAM + 2MB external Flash and 8MB external RAM + 4 MB external Flash.

Board have CAN, RS232, 10 Mbit Ethernet, SD/MMC card connector, external memory bus is available on connector.

eCos port is available for this board and uLinux port is preparing.

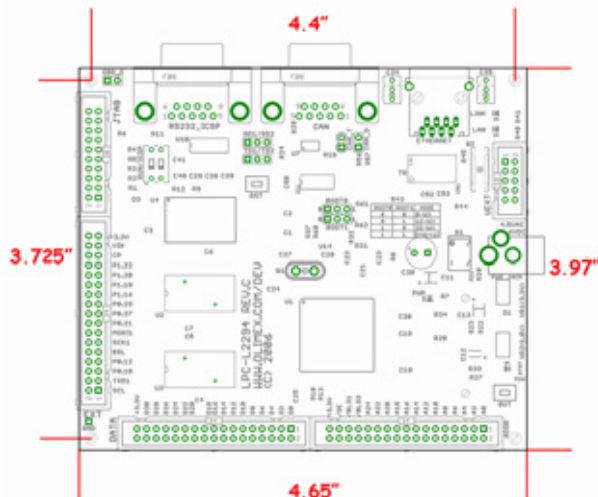
The board features are:

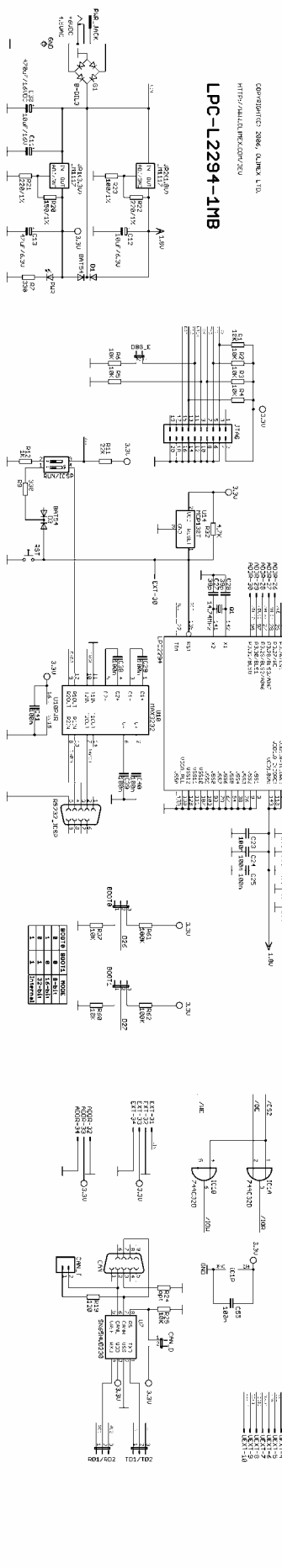
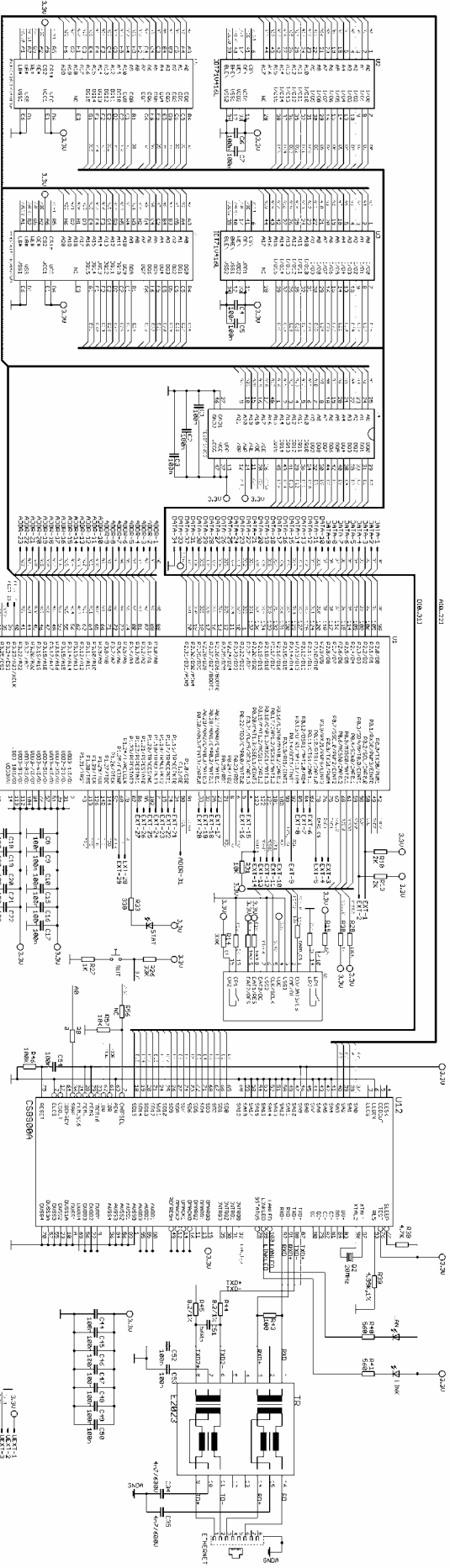
- **LPC2294** ARM7DTMI microcontroller 256KB internal Flash, 16KB internal RAM
- 10 MBit Ethernet with CS8900A in 16 bit mode and interrupts
- CAN 2.0 driver and interface
- RS232 driver and interface
- SD/MMC connector (on bottom side)
- External memory bus connector
- UEXT Olimex's standard connector with I2C, RS232, SPI and power supply
- JTAG connector
- PCB: FR-4, 1.5 mm (0,062"), red soldermask, white silkscreen component print
- Dimensions: 118x101 mm (4.65 x 3.97")

1MB RAM version is capable to run eCos with many application including TCP-IP

8MB RAM version is capable to run uLinux

Board dimensions and fix holes:

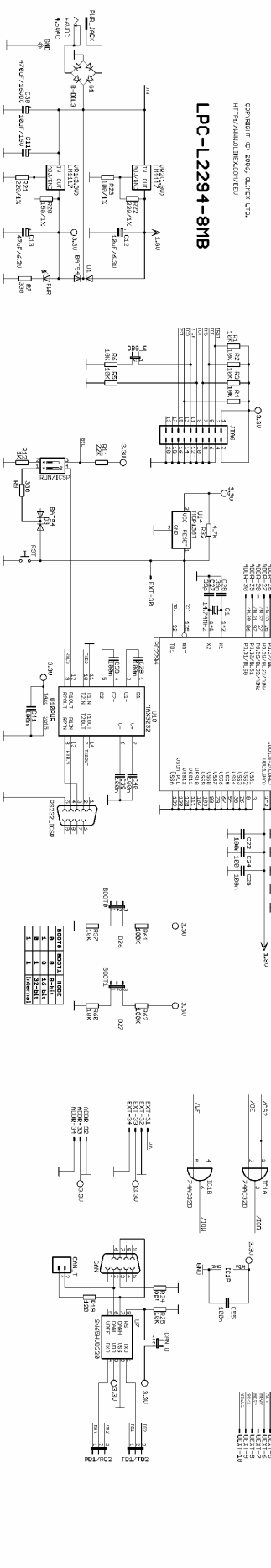
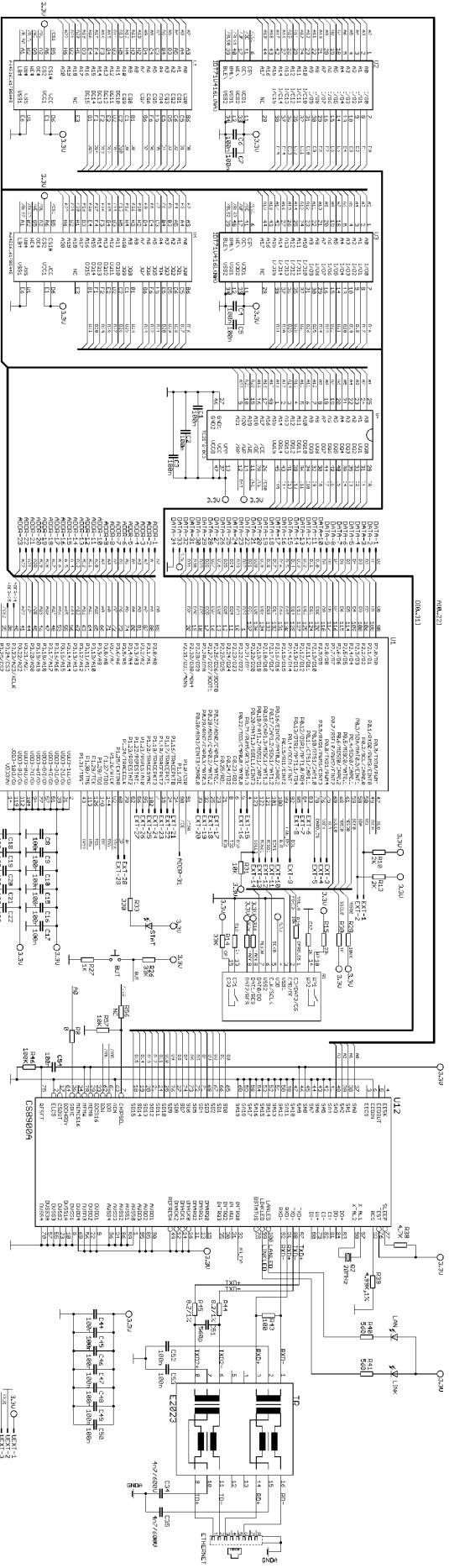




**LPC-L2294-1MB**

GERBERFILES 2006\_01.MXD, 01.MXD, 1.MXD  
 HTS/FAH/MLR/KOP/DEU

3.3V 0-1  
 3.3V 0-2  
 3.3V 0-3  
 3.3V 0-4  
 3.3V 0-5  
 3.3V 0-6  
 3.3V 0-7  
 3.3V 0-8  
 3.3V 0-9  
 3.3V 0-10  
 3.3V 0-11  
 3.3V 0-12  
 3.3V 0-13  
 3.3V 0-14  
 3.3V 0-15  
 3.3V 0-16  
 3.3V 0-17  
 3.3V 0-18  
 3.3V 0-19  
 3.3V 0-20  
 3.3V 0-21  
 3.3V 0-22  
 3.3V 0-23  
 3.3V 0-24  
 3.3V 0-25  
 3.3V 0-26  
 3.3V 0-27  
 3.3V 0-28  
 3.3V 0-29  
 3.3V 0-30  
 3.3V 0-31  
 3.3V 0-32  
 3.3V 0-33  
 3.3V 0-34  
 3.3V 0-35  
 3.3V 0-36  
 3.3V 0-37  
 3.3V 0-38  
 3.3V 0-39  
 3.3V 0-40  
 3.3V 0-41  
 3.3V 0-42  
 3.3V 0-43  
 3.3V 0-44  
 3.3V 0-45  
 3.3V 0-46  
 3.3V 0-47  
 3.3V 0-48  
 3.3V 0-49  
 3.3V 0-50  
 3.3V 0-51  
 3.3V 0-52  
 3.3V 0-53  
 3.3V 0-54  
 3.3V 0-55  
 3.3V 0-56  
 3.3V 0-57  
 3.3V 0-58  
 3.3V 0-59  
 3.3V 0-60  
 3.3V 0-61  
 3.3V 0-62  
 3.3V 0-63  
 3.3V 0-64  
 3.3V 0-65  
 3.3V 0-66  
 3.3V 0-67  
 3.3V 0-68  
 3.3V 0-69  
 3.3V 0-70  
 3.3V 0-71  
 3.3V 0-72  
 3.3V 0-73  
 3.3V 0-74  
 3.3V 0-75  
 3.3V 0-76  
 3.3V 0-77  
 3.3V 0-78  
 3.3V 0-79  
 3.3V 0-80  
 3.3V 0-81  
 3.3V 0-82  
 3.3V 0-83  
 3.3V 0-84  
 3.3V 0-85  
 3.3V 0-86  
 3.3V 0-87  
 3.3V 0-88  
 3.3V 0-89  
 3.3V 0-90  
 3.3V 0-91  
 3.3V 0-92  
 3.3V 0-93  
 3.3V 0-94  
 3.3V 0-95  
 3.3V 0-96  
 3.3V 0-97  
 3.3V 0-98  
 3.3V 0-99  
 3.3V 0-100



GERBER FILE: LPC-L2294-8MB  
 URL: <http://www.lumileds.com>

Component List:
 

U1	L2294	8MB NAND
U2	L2294	256KB SRAM
U3	L2294	UART
U4	L2294	I2C
U5	L2294	SPI
U6	L2294	CAN
U7	L2294	Temp Sensor
U8	L2294	RTC
U9	L2294	WDT