

How to install and use the MSP430-JTAGs with Code Composer Studio v4

For new users who install drivers for very first time:

Plug your USB cable to MSP430-JTAG-TINY or MSP430-JTAG-ISO, plug MSP430-JTAG-RF to USB, when Windows ask you for drivers, browse to the directory where you unpacked Drivers.

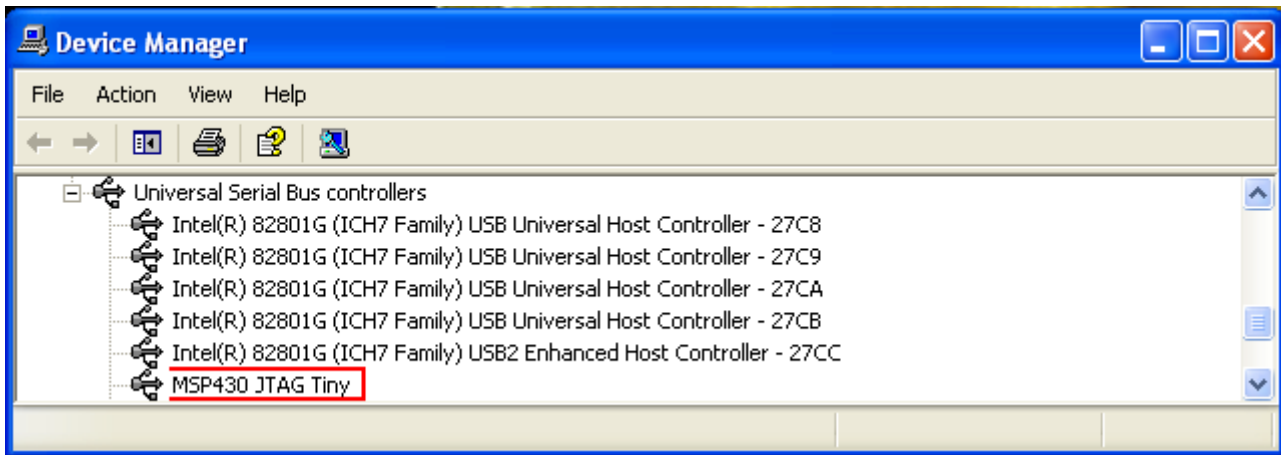
First you should download drivers for your JTAG from our web page:

<http://www.olimex.com/dev>

On each JTAG Documents, there is download drivers link - [MSP430 JTAG drivers Ver.1.040 - 01-DEC-2010](#).

After you download drivers, you have to extract them. Folder named „OLIMEX MSP430-DLL drivers 1.040“ will appear. In this folder you have folder „Drivers“ - this will be the path to your drivers when you install them.

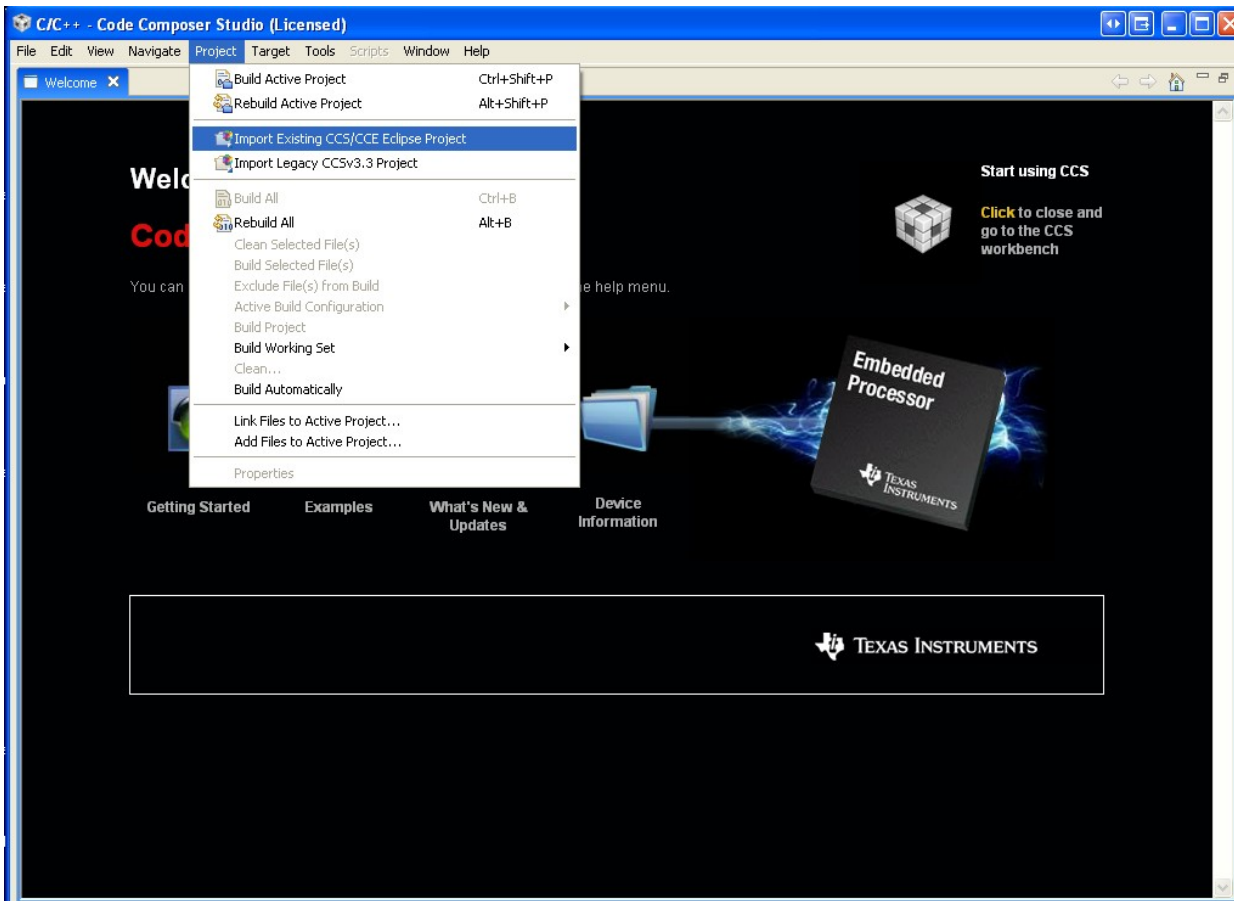
If everything is correct, in Device Manager there will be new folder with the name of your JTAG:



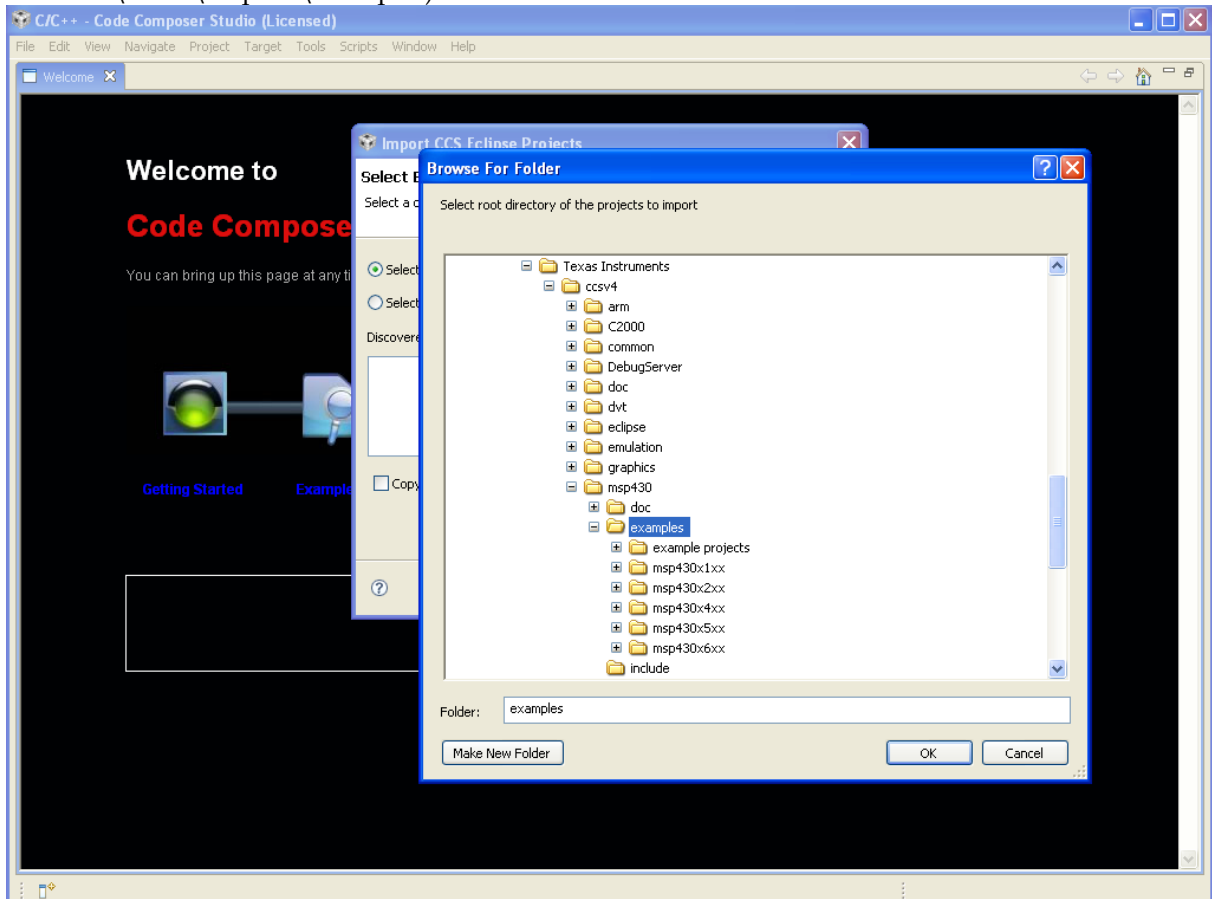
After your drivers installation finish, open folder „OLIMEX MSP430-DLL drivers 1.040“ and copy from there files: FTD2XX.dll, HIL.dll, MSP430.dll, olimex.dll and SiUSBXp.dll - Paste these „*.dll“ files in Code Composer Studio v4 installed directory:

C:\Program Files\Texas Instruments\ccsv4\DebugServer\drivers (on your PC the path may be different). Some of „*.dll“ files have the same name as other „*.dll“ files in this folder, it is good to save the old „*.dll“ files, too, not just replace them with the new ones, because for other purposes you may need them.

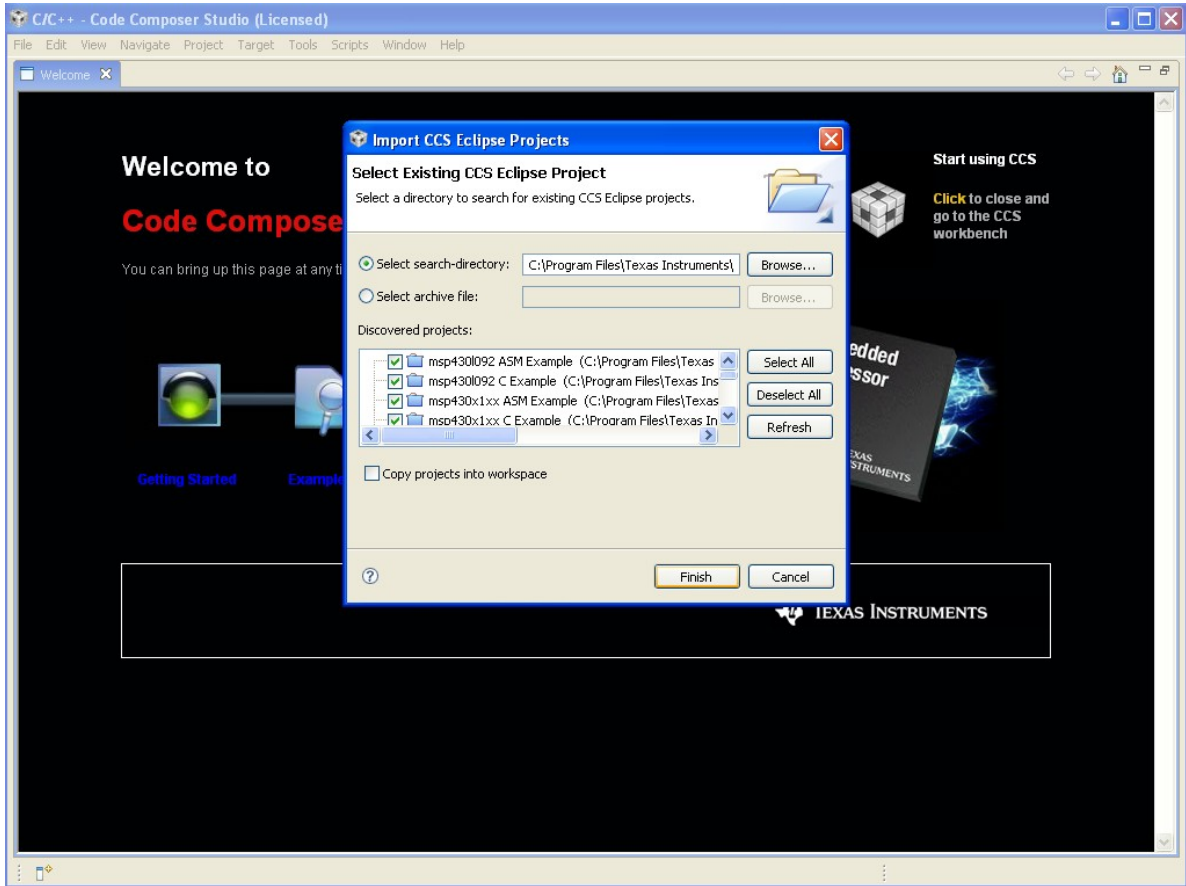
Now, open Code Composer Studio v4 and from menu “Project” select “Import Existing CCS/CCE Eclipse Project”:



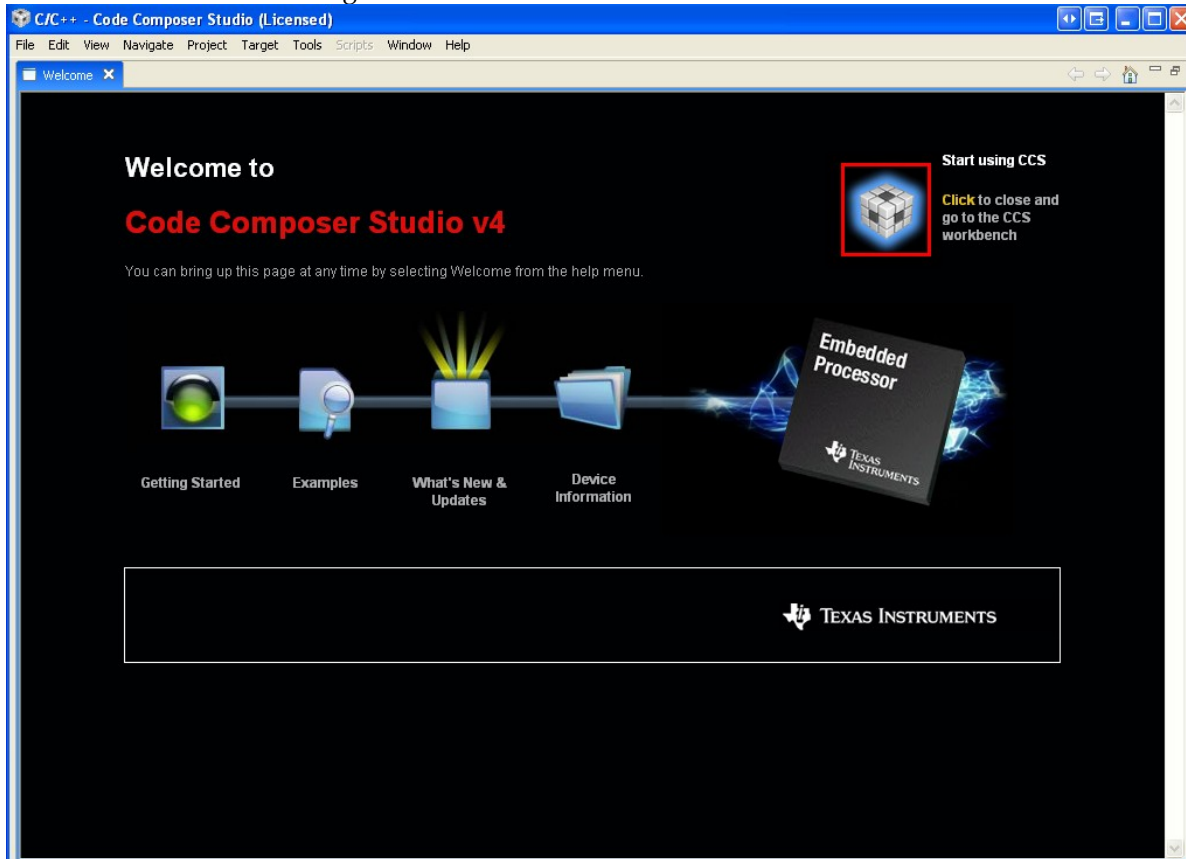
Select path of the examples (on my PC it is: C:\Program Files\Texas Instruments\ccsv4\msp430\examples):



Here click "Finish":

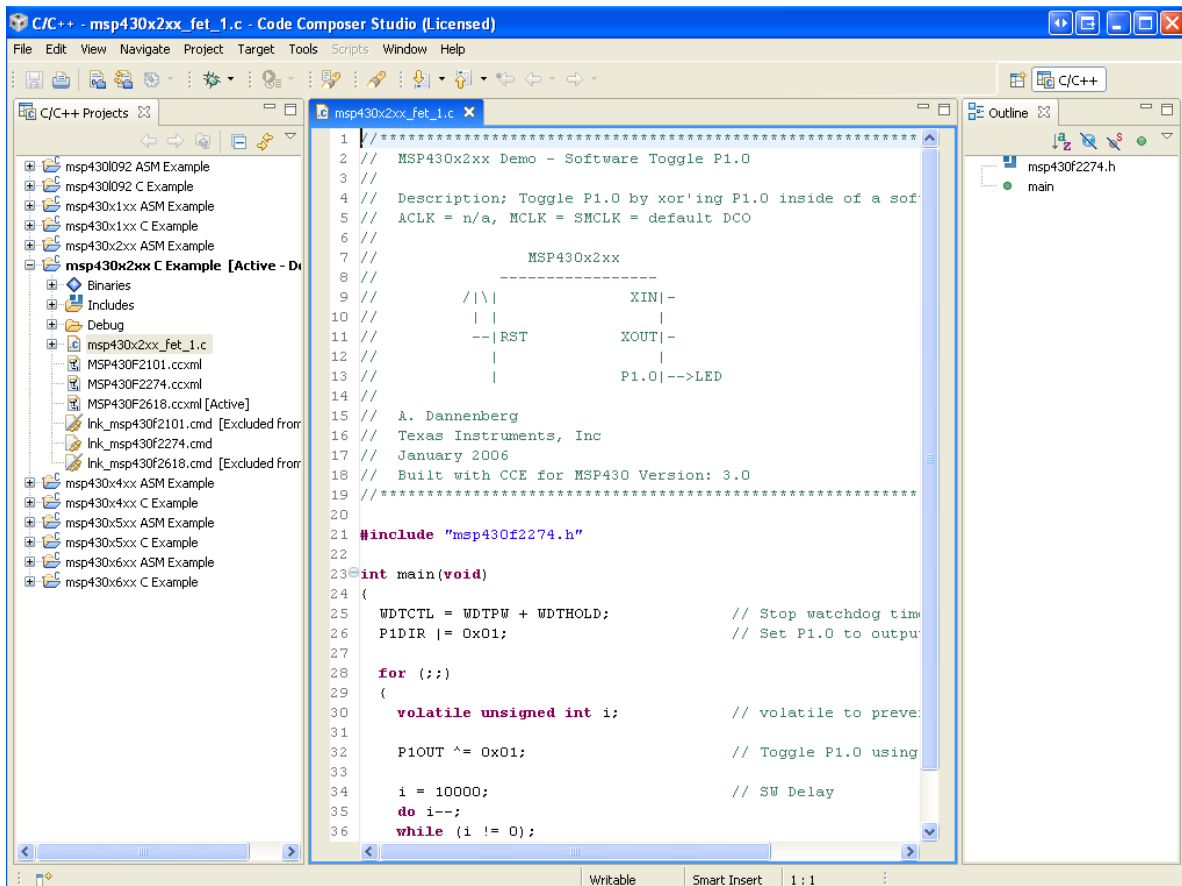
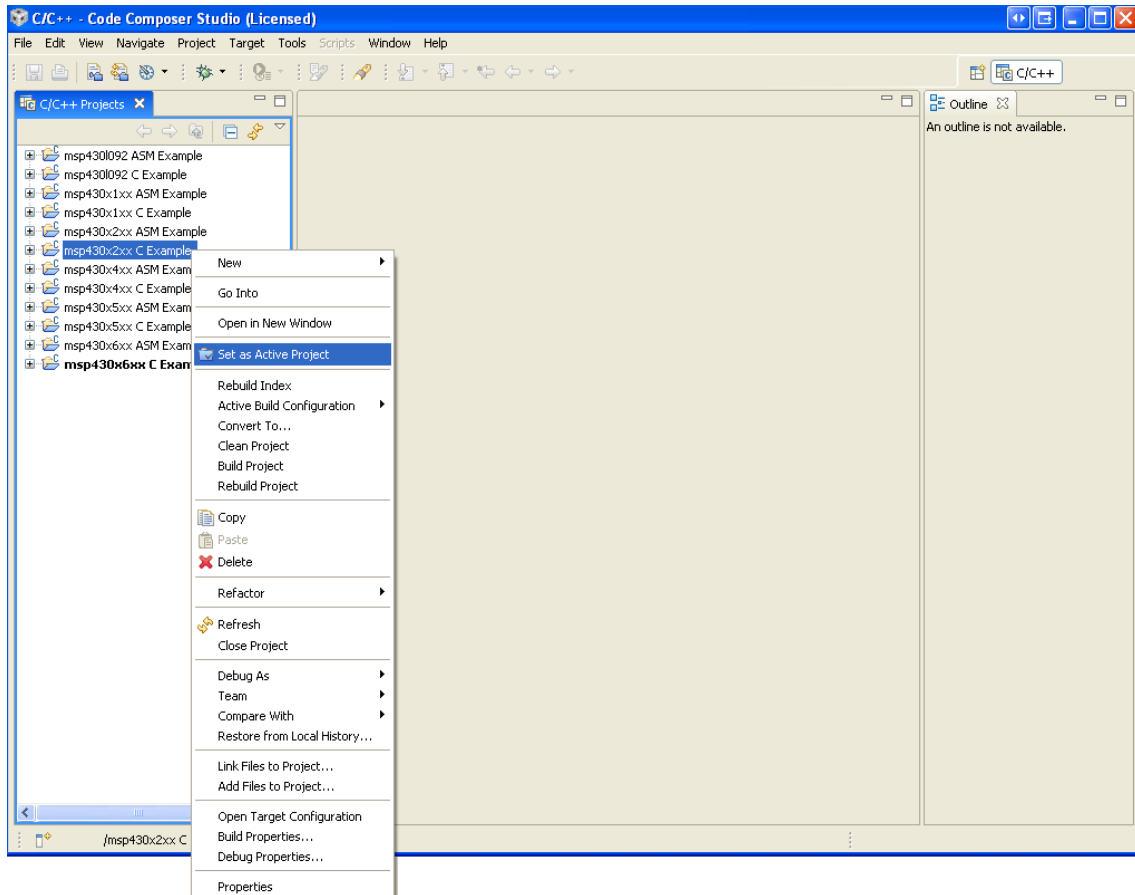


Now "Click to close and go to the CCS workbench":

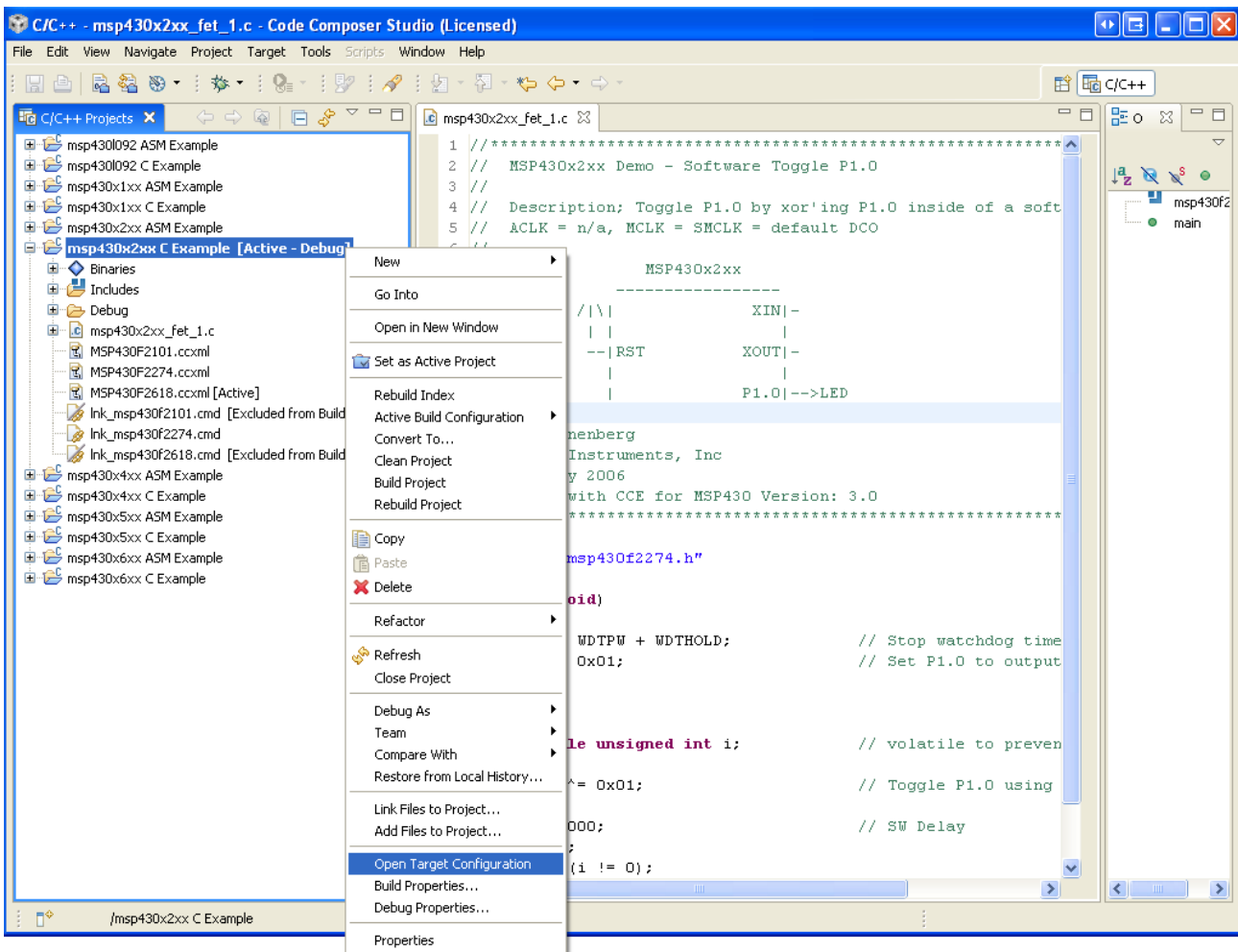


Now you may select example suitable for your microcontroller, click on it with right button of the

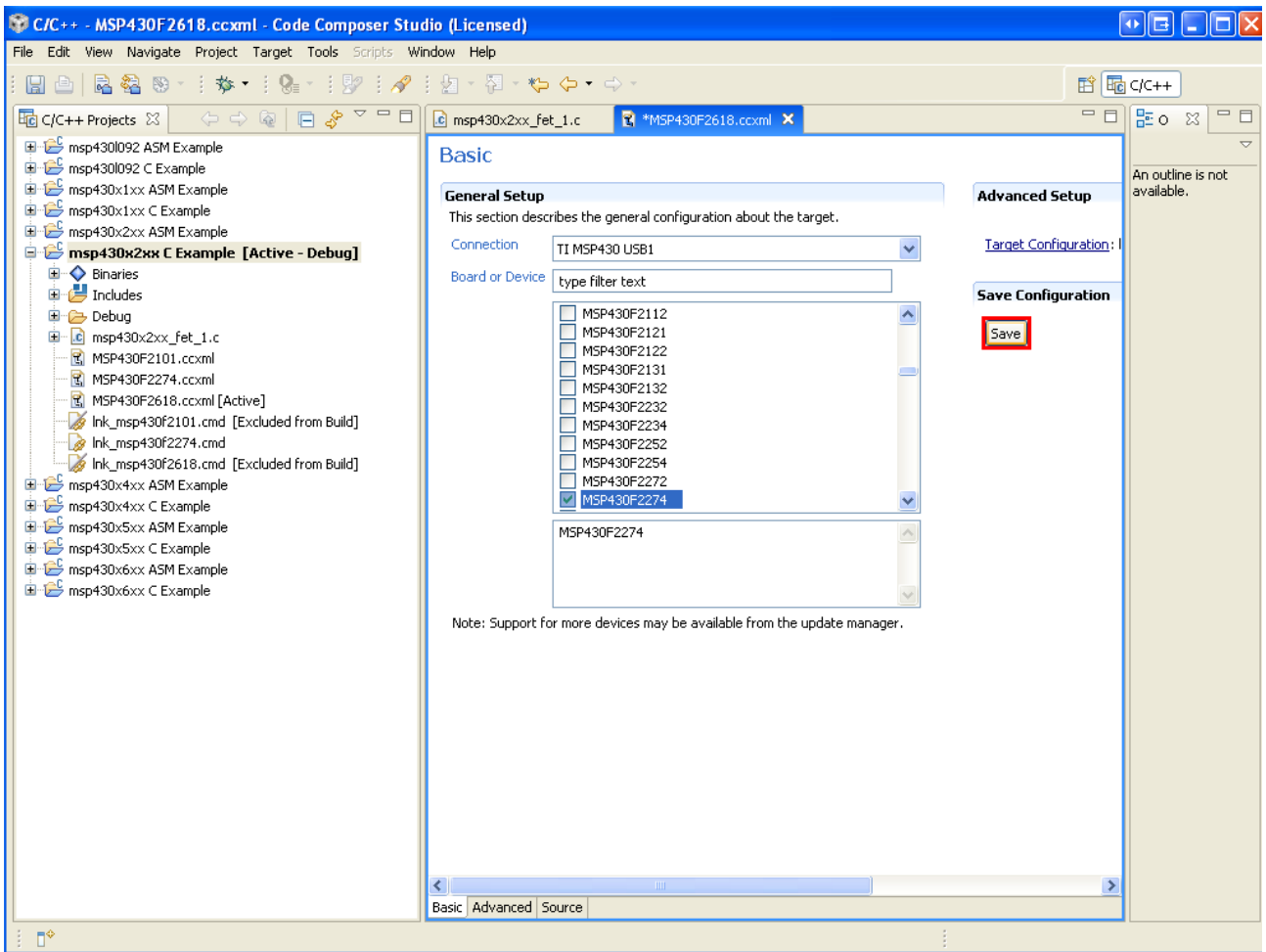
mouse and choose "Set as Active Project":



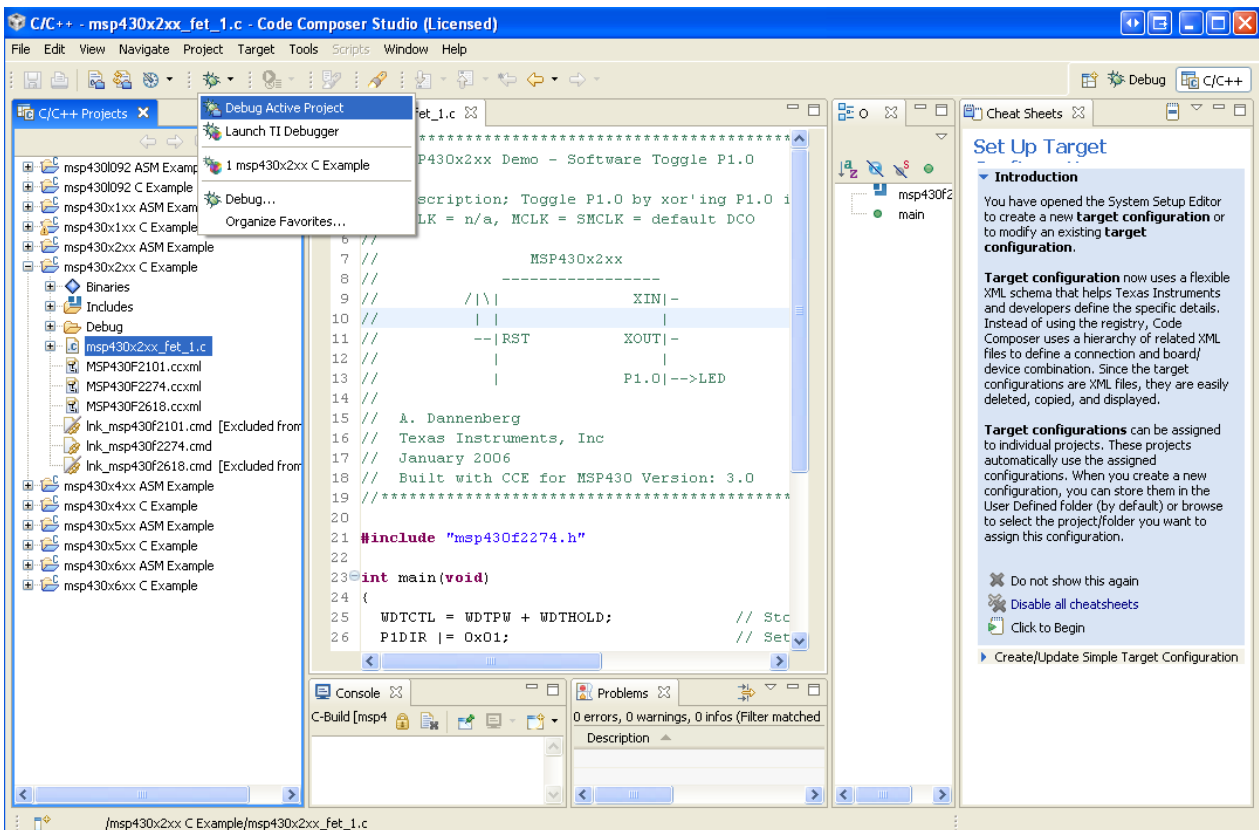
After you have opened the selected project, click with right button of the mouse on the project and choose “Open Target Configuration”:

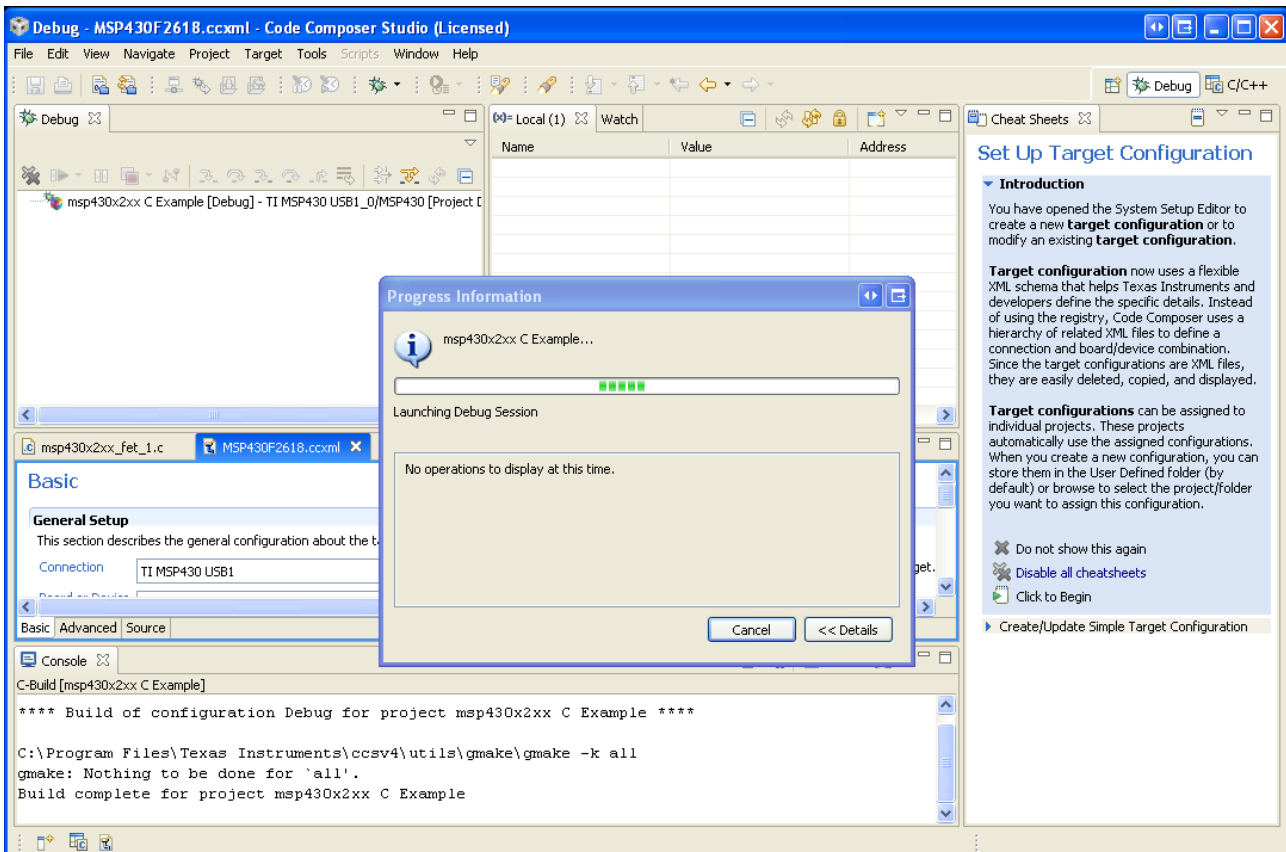


In “Basic” window which will appear for “Connection” select “TI MSP430 USB1”, choose your microcontroller and click on “Save” button:

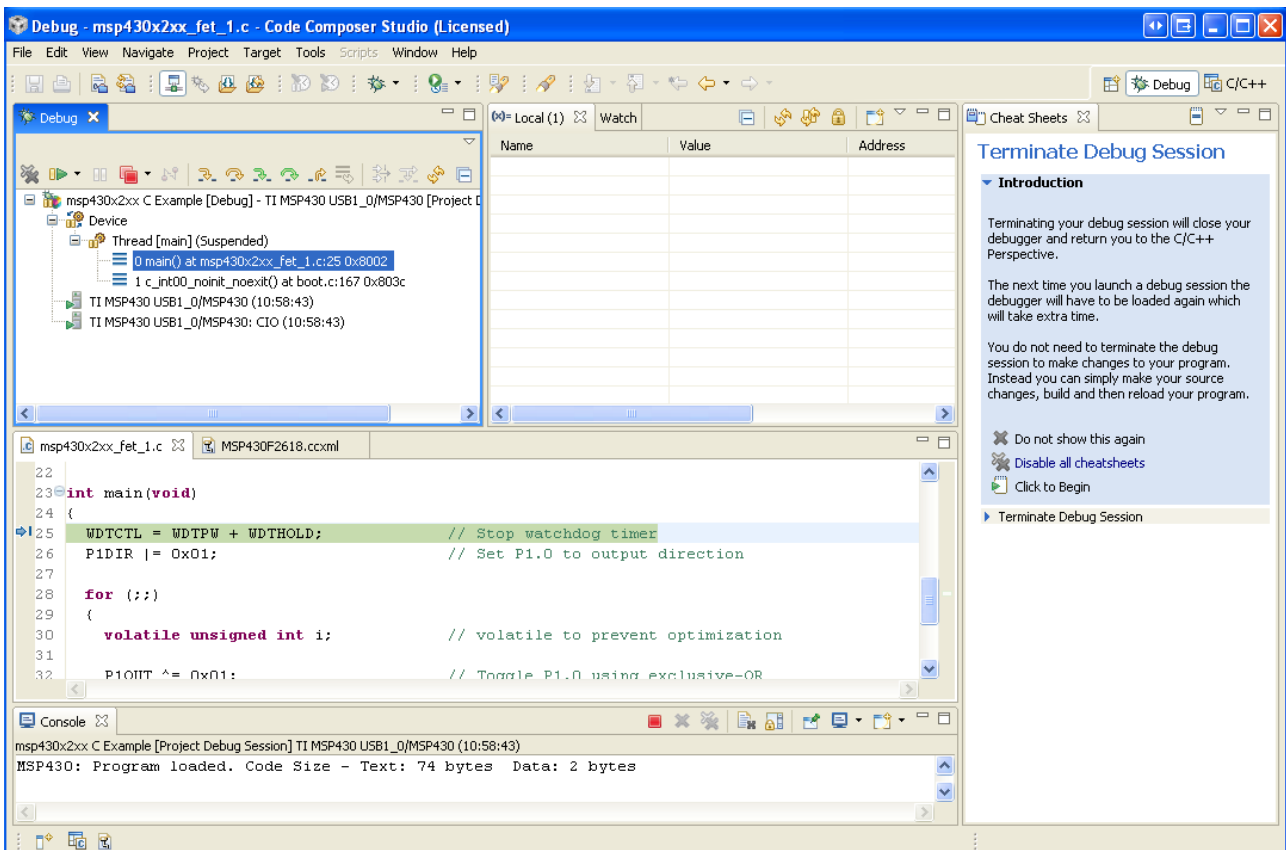


Now you can „Debug Active Project“:





Now you can enjoy your project applications:



! This example is with MSP-JTAG-TINY and MSP430-P2274 development board.