

How to install and use the USB MSP430-JTAG/ISO/TINY/RF JTAGs

For new users who install drivers for very first time:
Plug your USB cable to MSP430-JTAG-TINY or MSP430-JTAG-ISO, plug MSP430-JTAG-RF to USB, when Windows ask you for drivers, browse to the directory where you unpacked Drivers.

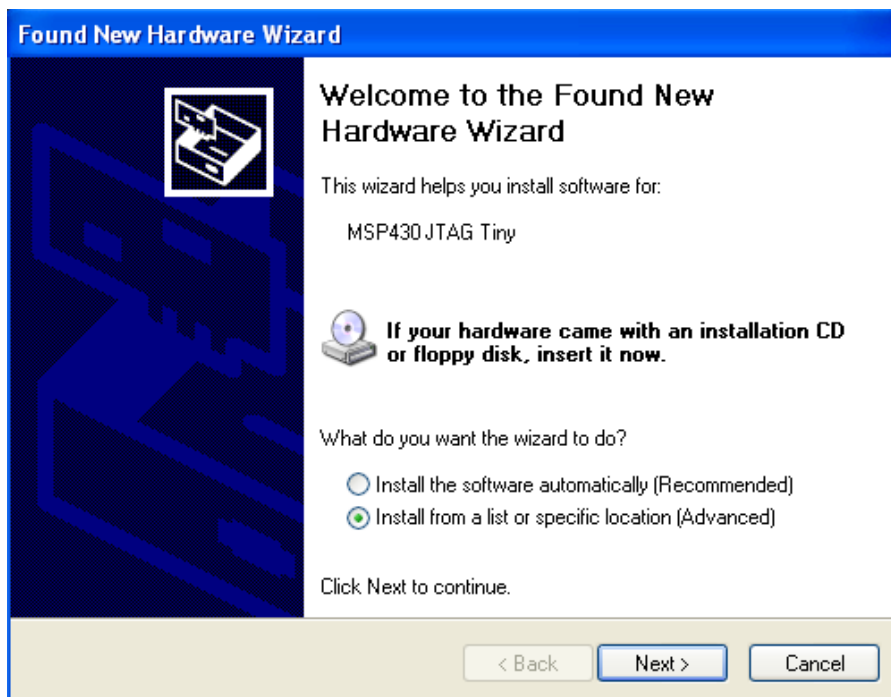
First you should download drivers for your JTAG from our web page:
<http://www.olimex.com/dev>

On each JTAG Documents, there is download drivers link - [MSP430 JTAG drivers Ver.1.035 - 27-OCT-2009](#).

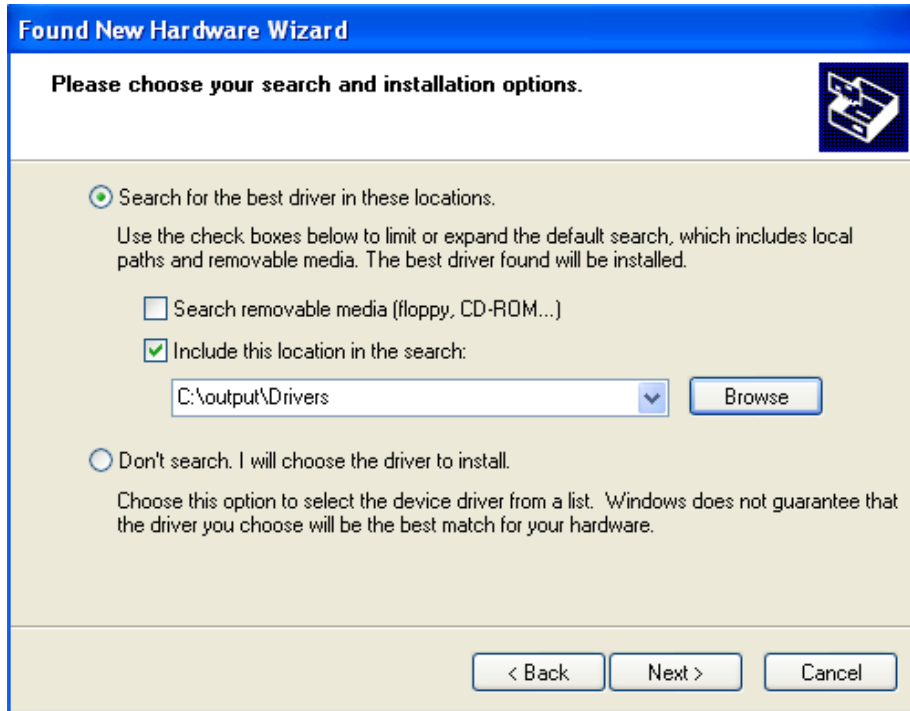
After you download drivers, you have to extract them. After this a folder named „output“ will appear. In this folder you have folder „Drivers“ - this will be the way to your drivers when you install them.

Here are some photos of drivers installation:

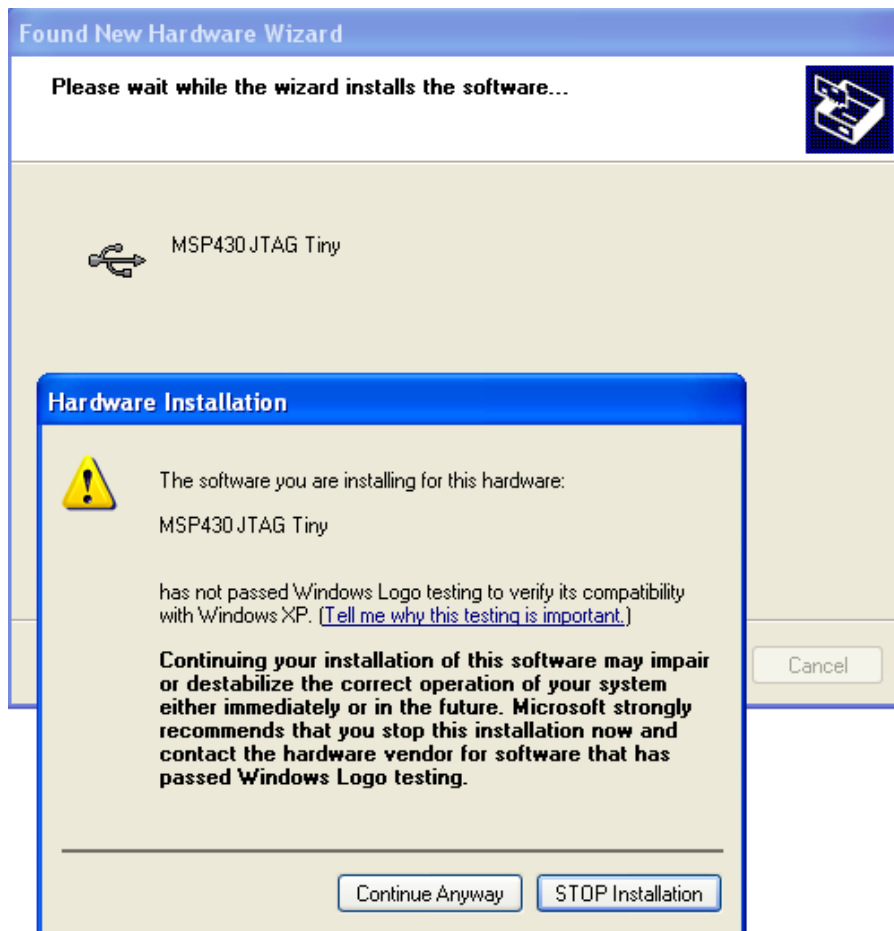
Step 1:



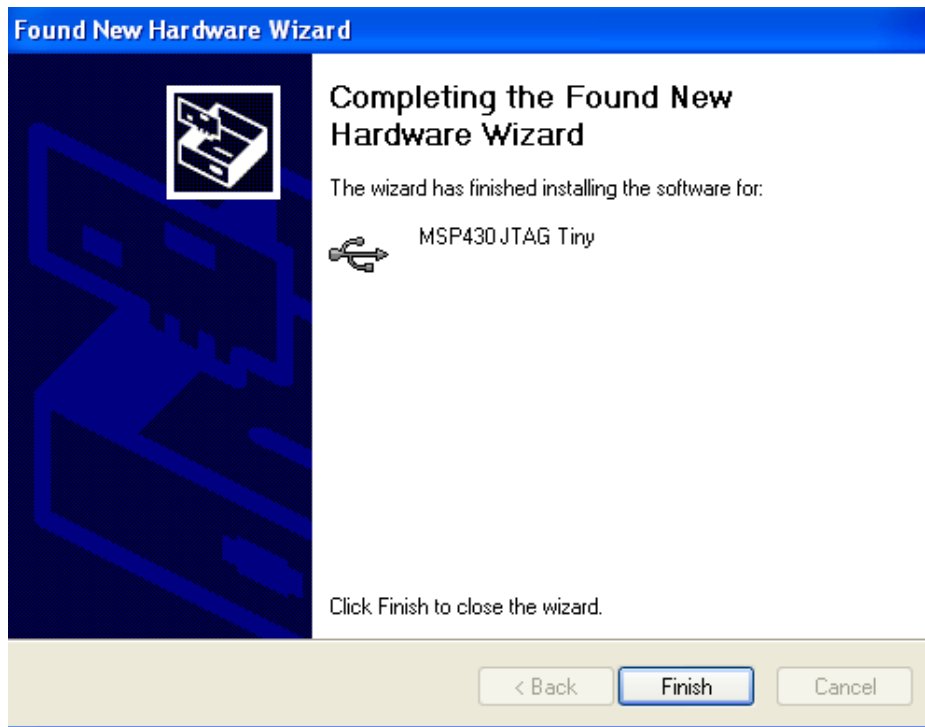
Step 2:



Step 3:



Step 4:

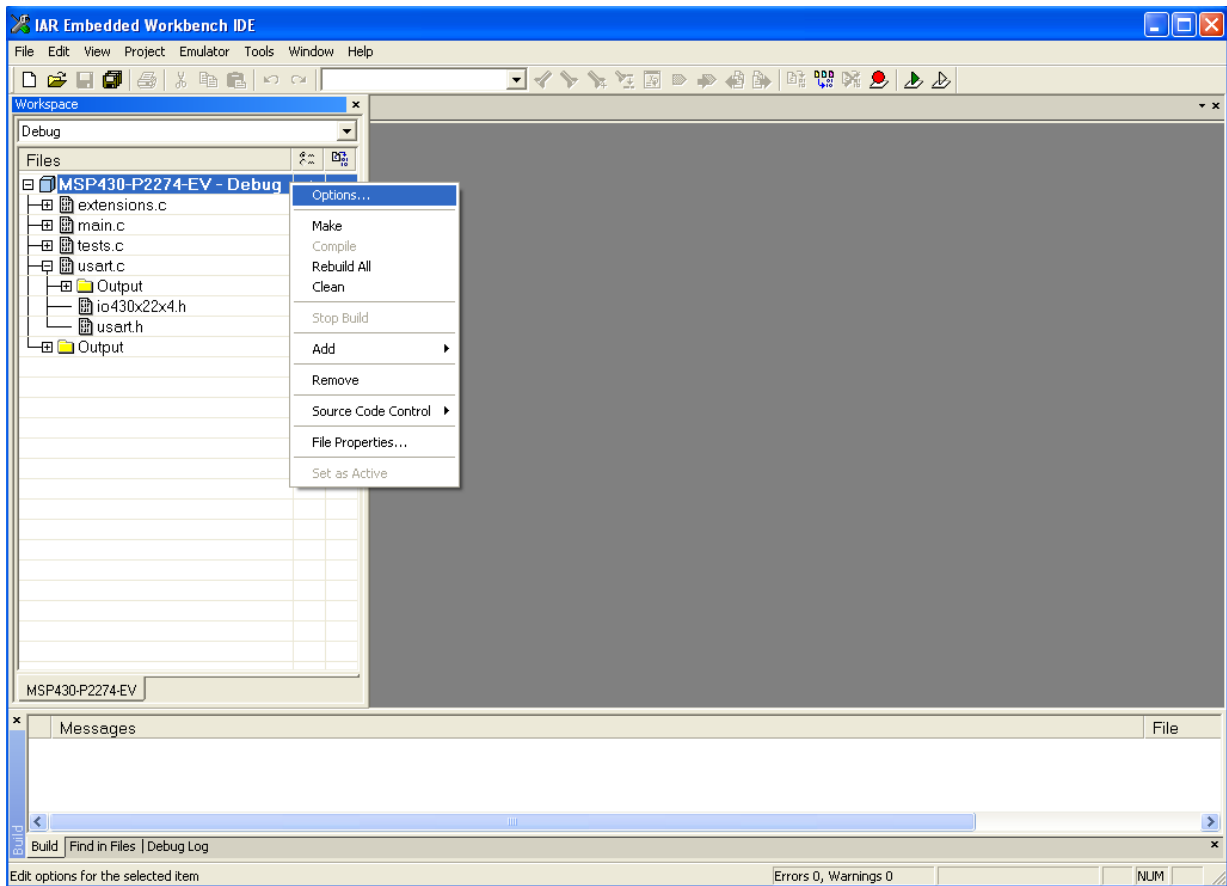


If you are old users just replace the old DLLs with the new ones.

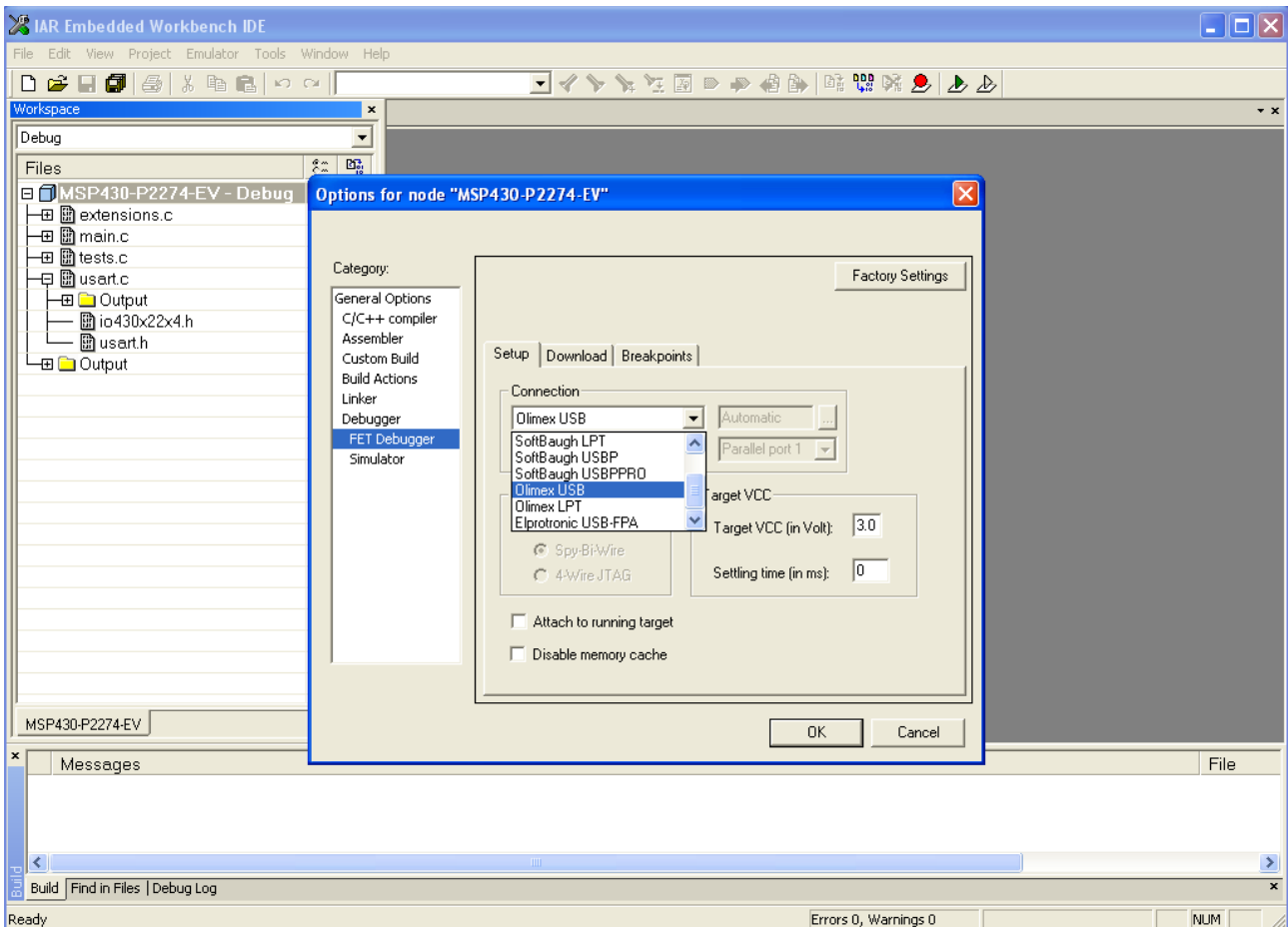
After your drivers installation finish, open folder „output“ and copy from there files: FTD2XX.dll, HIL.dll, MSP430.dll, olimex.dll and SiUSBXp.dll - Paste this „*.dll“ files in IAR MSP430 installed directory\430\bin

For updating MSP430-JTAG-RF firmware, the current at pin 4 of the JTAG should be 20 mA at least and the voltage from 2.7 V to 3.6 V. For normal work in debug mode – the voltage at pin 4 of the JTAG should be from 2 V to 3.6 V, and the current should be up to 20 mA.

Open your IAR MSP430 compiler. Open your Workspace, click with the right mouse button on your workspace and choose - Options...:



The following window will appear:



In this window - choose FET Debugger - and there in connection - choose „Olimex USB“ for MSP430-JTAG-TINY, MSP430-JTAG-ISO and MSP430-JTAG-RF, or „Olimex LPT“ for MSP430-JTAG.

Now you are ready to use your Olimex MSP430 JTAG.

For more information see readme.txt in folder „output“.